

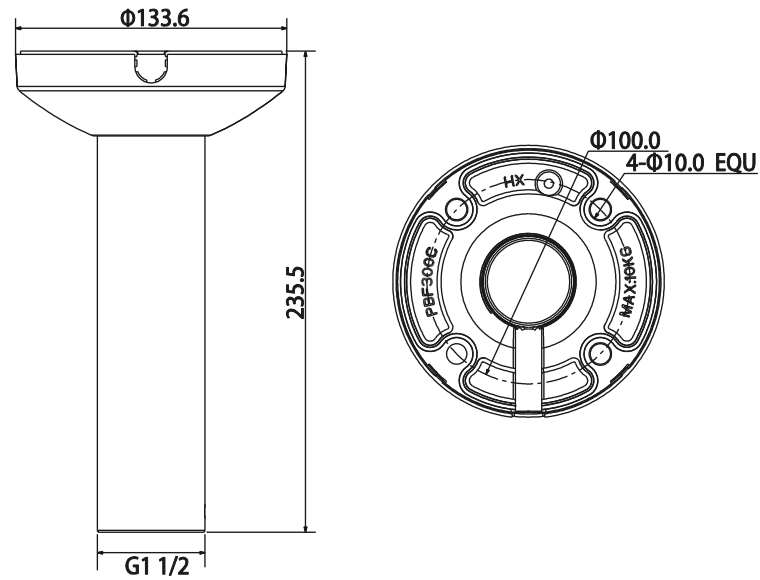
CM-EL300C



Features

- Material: Aluminum & PC
- Ceiling Mount Bracket
- Neat & Integrated design

Dimensions (mm)



Specifications

Model	CM-EL300C
General	
Material	Aluminum & PC
Dimension (W x H x D)	Φ133.6mm x 235.5mm
Pipe Thread	G1 1/2"
Operating Temperature	-40°C ~60°C
Humidity	0~90% RH
Load Bearing	7.0Kg
Weight	0.78Kg
Applicable Model	Please see "Accessory Selection"

Application

